



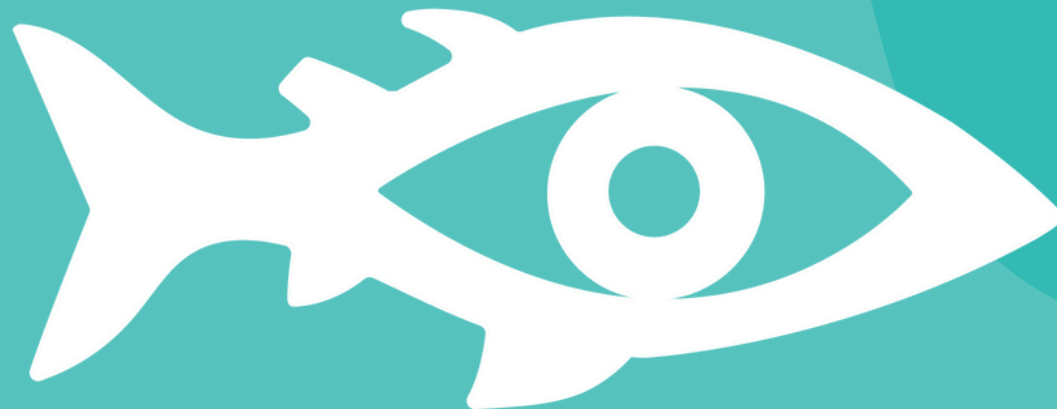
RESEARCH  
PROGRAM  
FISHERIES AND  
BIODIVERSITY  
IN THE WESTERN  
INDIAN OCEAN



# UNDERSTAND BRIDGES



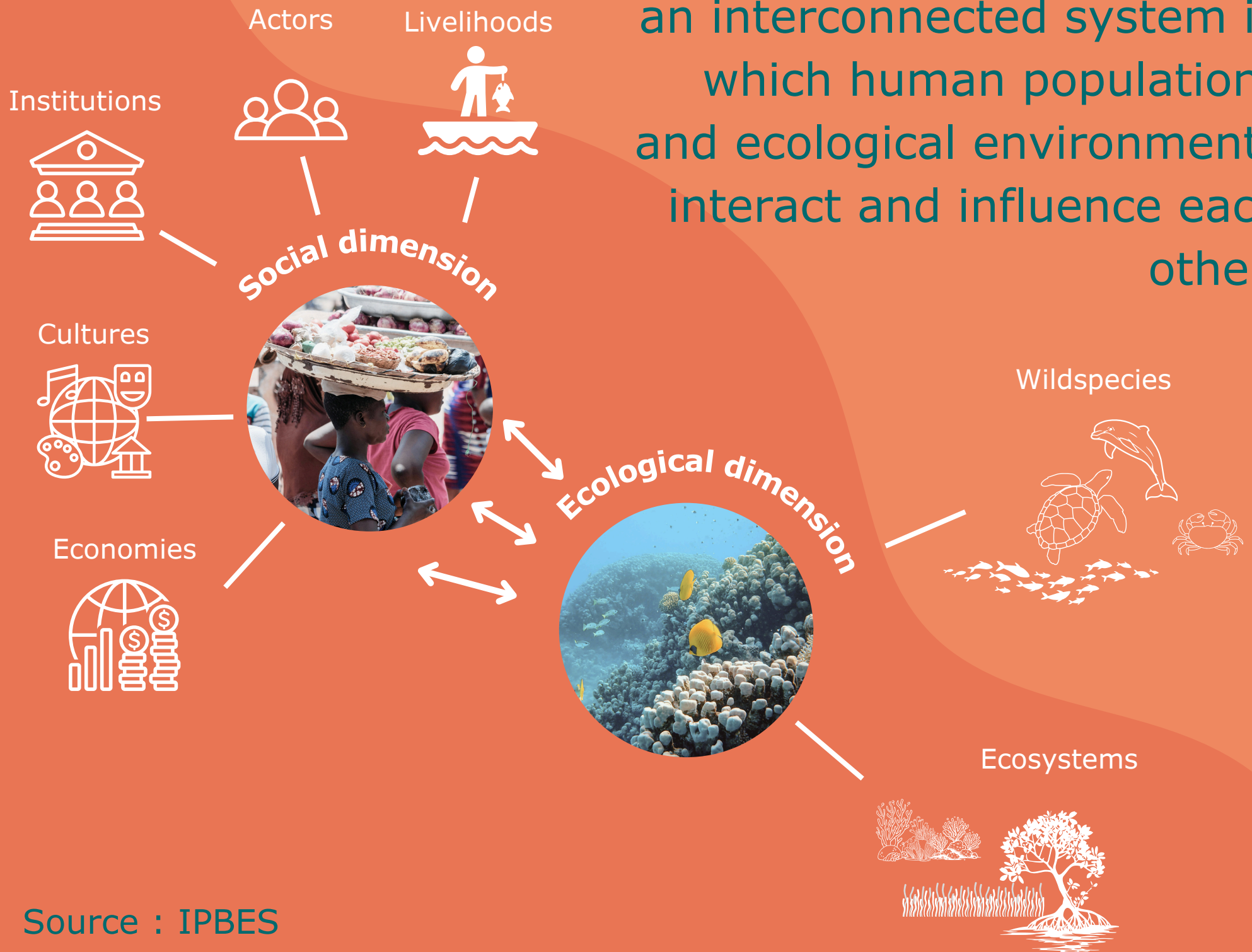
## 7 KEY CONCEPTS AT THE HEART OF THE PROGRAM



1

# SOCIAL-ECOLOGICAL SYSTEM

A social-ecological system is an interconnected system in which human populations and ecological environments interact and influence each other.



# GOVERNANCE OF THE COMMONS

2

Following individual short-term interests in the exploitation of a common good, such as catching fish in the ocean, produces results that are in nobody's long-term interest. For this reason, governance\* of the commons is at the heart of the issues of sustainability and equity.

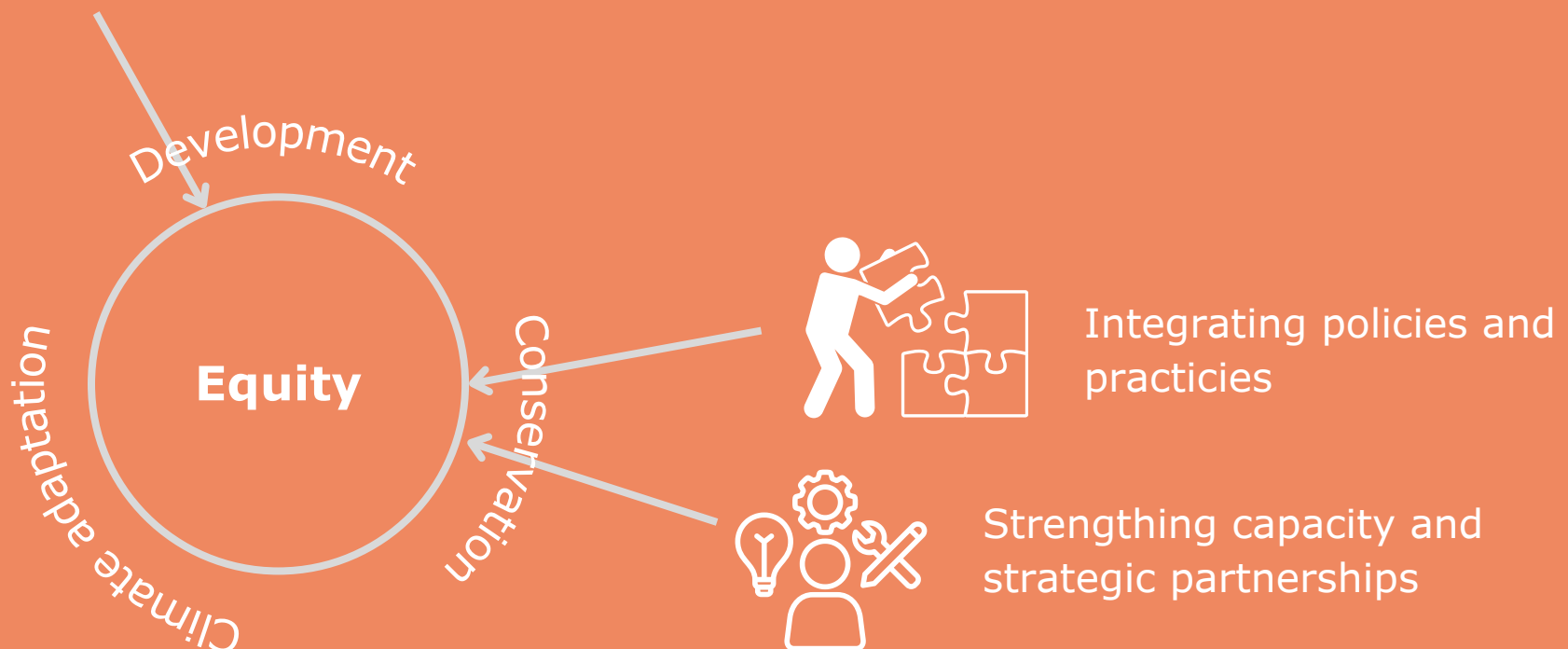
\*The processes of interaction and decision-making among the actors involved in a collective problem that lead to the creation, reinforcement or reproduction of social norms and institutions.

# EQUITY

3

Ocean equity is about advancing justice in the way resources and benefits from the ocean are distributed among different groups of people, while ensuring social, economic and environmental sustainability.

Addressing power asymmetries



Source : Claudet et al. (2024)

# CO-PRODUCTIVE AGILITY

4

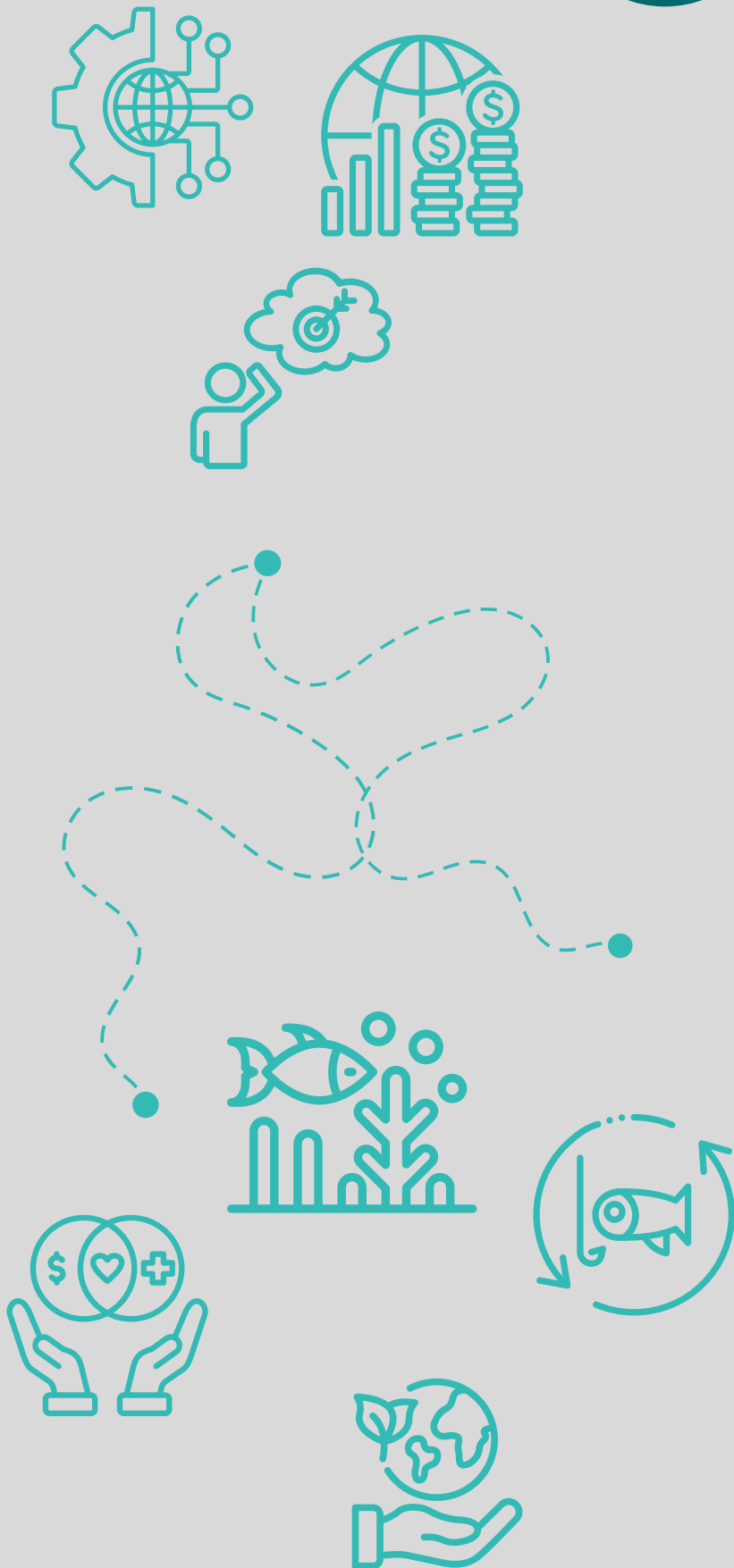
Refers to the willingness and ability to engage in collective dialogue to develop ideas and actions that would not have been possible from the outset. It enables the emergence of lasting transformations.



5

# TRANSFORMATIVE CHANGES

It means reorganizing a system to reconcile conservation and sustainable use of marine biodiversity with long-term quality of life for human populations.



Source : IPBES (2019)

# NETWORK APPROACHES

Achieving effective and sustainable environmental governance requires a better understanding of the causes and consequences of interdependencies between people and ecosystems. Network approaches are used to conceptualize and analyze them.

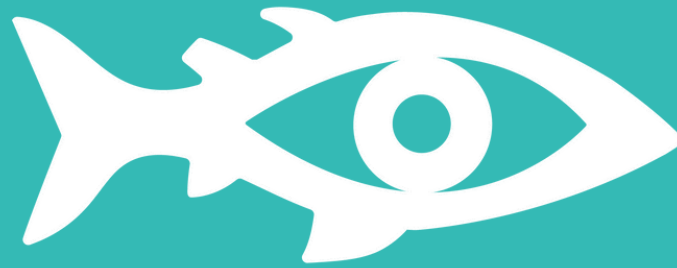




## ENVIRONMENTAL SECURITY

It describes the means deployed to deal with the threats posed to individuals, communities and nations by environmental events and developments. This concept takes into account the fact that environmental problems cross national borders.





# LEARN MORE ABOUT BRIDGES:



[WWW.BRIDGES-WIO.COM](http://WWW.BRIDGES-WIO.COM)



[@BRIDGES-WIO.BSKY.SOCIAL](https://www.bsky.social/@BRIDGES-WIO.BSKY.SOCIAL)



[@BRIDGES-RESEARCH-PROGRAM](https://www.linkedin.com/company/bridges-research-program)